

# SUEX<sup>®</sup>

*THE SUBMARINE EXPLORATION COMPANY*

THE SUBMARINE EXPLORATION COMPANY

# SUEX<sup>®</sup>



DIVE  
IN THE  
FAST  
LANE



The Suex Advanced Diving Vehicles represent the cutting-edge technology of underwater mobility. Performance, reliability, maneuverability, complete product range and the excellent after-market service are the cornerstones that make Suex undisputed leader in the underwater scooter market.

Diving a Suex ADV is an incredible experience, ensures both high level of maneuverability in overhead environments and comfort during extensive cruising. Years of unrivalled experience behind the Suex scooters is worldwide appreciated as well as the range of exclusive systems and patented devices.



DIVE  
IN THE  
FAST  
LANE

## 7SEVEN



## TECHNICAL FEATURES

Use:	RECREATIONAL			
Code:	71207	Model:	7Seven	
Length:	mm 790 (inch 31.1)	Width:	mm 790 (inch 31.1)	
Height:	mm 338 (inch 13,3)	Body diameter:	mm 200 (inch 7,67)	
Weight without battery:	kg 11,5 (lb 25,4)	Weight with battery:	kg 19 (lb 41.8)	
Material type:	Tecnopolymers/Polycarbonate		Max static thrust:	N 185 (lb41.5)
Top speed:	mt/min 60 (ft/min 197)	Run time full trigger:	min 60	
Cruise speed:	mt/min 45 (ft/min 148)	Run time cruise speed:	min 75	
Maximum operational depth:	mt 80 (ft 260)	Buoyancy/ trim:	Neutral/Neutral	
In-water usage temperature:	°C -5/+35 (°F +23/+95)	Battery type:	Pb	
Nominal Voltage:	Volt 24	Nominal Capacity:	Wh 360	
Charger power supply:	Volt 110/220 50/60HZ			

Dual Speed Control  
HI-GR Compound Proplock propeller  
Smartphone Connect



### FEATURES 2019

- Top speed is delivered with fully charged battery
- Diver : 70kg weight, 170cm high - wet suit single 10lt tank - horizontal trim
- Conditions : sea water - no flow/current



## TECHNICAL FEATURES

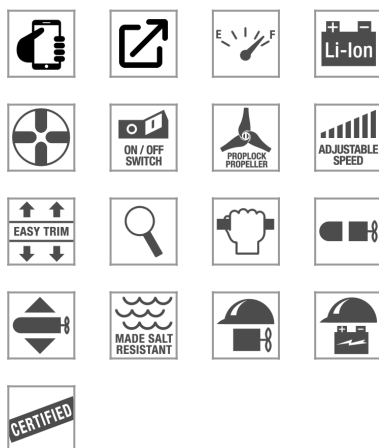
Use:	RECREATIONAL			
Code:	71420	Model:	VRt	
Length:	mm 720 (inch 28.3)	Width:	mm 720 (inch 28.3)	
Height:	mm 425 (inch 16.7)	Body diameter:	mm 200 (inch 7.8)	
Weight without battery:	kg 11,50 (lb 24.5)	Weight with battery:	kg 16,50 (lb 35.3)	
Material type:	Tecnopolymers/Polycarbonate		Max static thrust:	N 200 (lb44.96)
Top speed:	mt/min 65 (ft/min 213)	Run time full trigger:	min 65	
Cruise speed:	mt/min 45 (ft/min 148)	Run time cruise speed:	min 90	
Maximum operational depth:	mt 101 (ft 331)	Buoyancy/ trim:	Tecnopolymers/Polycarbonate	
In-water usage temperature:	°C -5/+35 (°F +23/+95)	Battery type:	Nimh	
Nominal Voltage:	Volt 24	Nominal Capacity:	Wh 324	
Charger power supply:	Volt 110/220 50/60HZ	Maximum recharging time:	h 4,5	

Dual Speed Control  
HI-GR Compound Proplock propeller  
HI-GR Compound body  
Smartphone Connect



### FEATURES 2019

- Top speed is delivered with fully charged battery
- Diver : 70kg weight, 170cm high - wet suit single 10lt tank - horizontal trim
- Conditions : sea water - no flow/current



## TECHNICAL FEATURES

Use:	RECREATIONAL	
Code:	71419	Model: VRx
Length:	mm 720 (inch 28.3)	Width: mm 720 (inch 28.3)
Height:	mm 425 (inch 16.7)	Body diameter: mm 200 (inch 7.8)
Weight without battery:	kg 11,50 (lb 24.5)	Weight with battery: kg 16,50 (lb 35.3)
Material type:	Tecnopolymers/Polycarbonate	
Top speed:	mt/min 65 (ft/min 213)	Run time full trigger: min 100
Cruise speed:	mt/min 45 (ft/min 148)	Run time cruise speed: min 150
Maximum operational depth:	mt 101 (ft 331)	Buoyancy/ trim: Tecnopolymers/Polycarbonate
In-water usage temperature:	°C -5/+35 (°F +23/+95)	Battery type: LI-ion
Nominal Voltage:	Volt 25,2	Nominal Capacity: Wh 512
Charger power supply:	Volt 110/220 50/60HZ	

Dual Speed Control  
 HI-GR Compound Proplock propeller  
 HI-GR Compound body  
 External charge  
 Smartphone Connect



### FEATURES 2019

- Top speed is delivered with fully charged battery
- Diver : 70kg weight, 170cm high - wet suit single 10lt tank - horizontal trim
- Conditions : sea water - no flow/current

XJT



## TECHNICAL FEATURES

Use:	TECH / COMMERCIAL		
Code:	71381	Model:	XJt
Length:	mm 814 (inch 31,1)	Width:	mm 814 (inch 31,1)
Height:	mm 340 (inch 13,4)	Body diameter:	mm 197 (inch 7,8)
Weight without battery:	kg 14 (lb 30,9)	Weight with battery:	kg 20 (lb 44,1)
Material type:	Aluminum body	Max static thrust:	N 330 (lb74,2)
Top speed:	mt/min 85 (ft/min 278)	Run time full trigger:	min 35
Cruise speed:	mt/min 45 (ft/min 45)	Run time cruise speed:	min 95
Test depth:	mt 300 (ft 984)	Maximum operational depth:	mt 200 (ft 656)
Buoyancy/ trim:	Neutral Trim and Buoyancy	In-water usage temperature:	°C -5/+35 (°F +23/+95)
Battery type:	Nimh	Nominal Voltage:	Volt 26,4
Nominal Capacity:	Wh 370	Charger power supply:	Volt 90/240 - 50/60 Hz
Maximum recharging time:	h 4,5		

DRIVE System Ready - Needs Li-Ion Battery  
Smartphone Connect  
Dual Speed trigger  
Fiber Carbon Proplock Propeller  
Battery Gauge

## FEATURES 2019

Bypass System  
HD Shaft Seal  
Carry Handle  
Cleaning and Lubrication Kit  
Tow Leash with boltsnap and bungee  
Extra Bolt snap

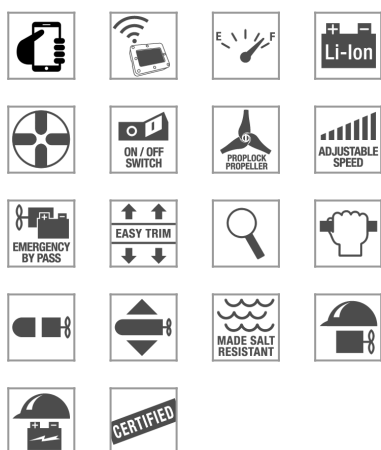
**DRIVE**  
DIVER REMOTE INFORMATION VIEW



- Top speed is delivered with fully charged battery
- Diver : 70kg weight, 170cm high - drysuit - double 12 tanks - horizontal trim
- Conditions : sea water - no flow/current



XJS



## TECHNICAL FEATURES

Use:	TECH / COMMERCIAL LONG RANGE / CAVE	
Code:	71380	Model: XJs
Length:	mm 814 (inch 31,1)	Width: mm 814 (inch 31,1)
Height:	mm 340 (inch 13,4)	Body diameter: mm 197 (inch 7,8)
Weight without battery:	kg 14 (lb 30,9)	Weight with battery: kg 20 (lb 44,1)
Material type:	Aluminum body	Max static thrust: N 330 (lb74,2)
Top speed:	mt/min 85 (ft/min 278)	Run time full trigger: min 85
Cruise speed:	mt/min 45 (ft/min 148)	Run time cruise speed: min 185
Test depth:	mt 300 (ft 984)	Maximum operational depth: mt 200 (ft 656)
Buoyancy/ trim:	Neutral Trim and Buoyancy	In-water usage temperature: °C -5/+35 (°F +23/+95)
Battery type:	LI-ion	Nominal Voltage: Volt 25,2
Nominal Capacity:	Wh 940	Charger power supply: Volt 90/240 - 50/60 Hz



DRIVE - (ERON D-1 not included)  
Smartphone connect  
Dual Speed trigger  
Fiber Carbon Proplock Propeller  
Battery Gauge

## FEATURES 2019

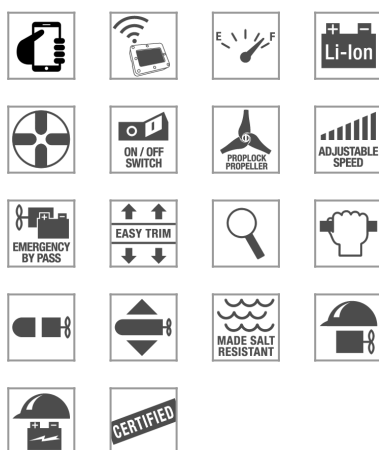
Bypass System  
HD Shaft Seal  
Carry Handle  
Cleaning and Lubrication Kit  
Tow Leash with boltsnap and bungee  
Extra Bolt snap

**DRIVE**  
DIVER REMOTE INFORMATION VIEW



- Top speed is delivered with fully charged battery
- Diver : 70kg weight, 170cm high - drysuit - double 12 tanks - horizontal trim
- Conditions : sea water - no flow/current

**XK**



## TECHNICAL FEATURES

Use:	TECH / COMMERCIAL LONG RANGE / CAVE		
Code:	71382	Model:	XK
Length:	mm 975 (inch 38,4)	Width:	mm 975 (inch 38,4)
Height:	mm 364 (inch 14,33)	Body diameter:	mm 197 (inch 7,8)
Weight without battery:	kg 17 (lb 37,48)	Weight with battery:	kg 25 (lb 55,12)
Material type:	Body in Nautical Aluminum		
Top speed:	mt/min 100 (ft/min 328)	Max static thrust:	N 375 (lb84,3)
Cruise speed:	mt/min 45 (ft/min 45)	Run time full trigger:	min 100
Test depth:	mt 300 (ft 984)	Run time cruise speed:	min 330
Buoyancy/ trim:	Neutral Trim and Buoyancy		
Battery type:	LI-ion	Maximum operational depth:	mt 200 (ft 656)
Nominal Capacity:	Wh 1340	In-water usage temperature:	°C -5/+35 (°F +23/+95)
		Nominal Voltage:	Volt 36
		Charger power supply:	Volt 90/240 - 50/60 Hz

DRIVE - (ERON D-1 not included)  
Smartphone connect  
Dual Speed trigger  
Fiber Carbon Proplock Propeller  
Battery Gauge

## FEATURES 2019

Bypass System  
HD Shaft Seal  
Carry Handle  
Cleaning and Lubrication Kit  
Tow Leash with boltsnap and bungee  
Extra Bolt snap



- Top speed is delivered with fully charged battery
- Diver : 70kg weight, 170cm high - drysuit - double 12 tanks - horizontal trim
- Conditions : sea water - no flow/current

## ACCESSORIES



### Cod. 71428 ERON D-1 DASHBOARD

EUR 980,00 IN BUNDLE WITH A DPV + TAXES EUR 1250,00 STAND ALONE + TAXES    Wireless ADV data receiver  
ADV and wrist mounting One touch functions activation Minutes of Residual ADV Burntime at actual speed ADV  
Battery state of charge ADV Instant fuel

Compatible with models: 7Seven | VRt | VRx | XJt | XJs | XK |



### Cod. 71425 LITHIUM BATTERY PACK FOR VRx

Lithium battery pack for VRx : 512 Wh

Compatible with models: VRx |



### Cod. 71101 LITHIUM CHARGER FOR VRx

STANDARD 3A CHARGER FOR VRx LITHIUM BATTERY CHARGING TIME 7H

Compatible with models: VRx |



### Cod. 71102 FAST CHARGER LITHIUM FOR VRx

FAST CHARGER 7A FOR LITHIUM BATTERY VRx CHARGING TIME 3HOURS.BEST CHOICE FOR RENTAL USE

Compatible with models: VRx |



### Cod. 71084 CONVERSION KIT NIMH FOR VRx

Conversion Kit NIMH for VRx

Compatible with models: VRx |



### Cod. 71082 VRt NIMH BATTERY PACK

VRt battery pack

Compatible with models: VRt |





**Cod. 71083 BATTERY CHARGER NIMH VRt**

Battery charger NIMH VRt

**Compatible with models: VRt |**



**Cod. 71460 CONVERSION KIT LI-ION VRt**

Conversion Kit LI-ION VRt

**Compatible with models: VRt |**



**Cod. 71212 BATTERY PACK 7SEVEN**

**Compatible with models: 7Seven |**



**Cod. 70219 BATTERY CHARGER FOR 7SEVEN**

**Compatible with models: 7Seven |**



**Cod. 71403 BATTERY PACK XJt**

Nimh battery pack 26.4V 14Ah is assembled with built-in cut-off. Cables and connectors included. Use proper charger only 70088 CB Nimh

**Compatible with models: XJt |**



**Cod. 71405 BATTERY CHARGER XJt**

Computerized battery charger for Nimh batteries 14Ah and 16 Ah. 110/220Volts 50/60Hz Fits als HDVT16 and Zeuxo 16

**Compatible with models: XJt |**



#### **Cod. 70737 CONVERSION KIT LHON XJt**

The Kit includes Charger, spacer, sea water ballast Li-ion Battery Pack for XJs with DRIVE System Nominal Voltage 25,2V Nominal Capacity 940Wh CE and UN38.3 Certified for Transportation Proprietary BMS control board with unique Suex Specs Battery Charge LCD read out On Board DRIVE

**Compatible with models: XJt |**



#### **Cod. 71393 BATTERY PACK XJs**

Li-ion Battery Pack for XJs with DRIVE System Nominal Voltage 25,2V Nominal Capacity 940Wh CE and UN38.3 Certified for Transportation Proprietary BMS control board with unique Suex Specs Battery Charge LCD read out On Board DRIVE System :

**Compatible with models: XJs |**



#### **Cod. 71398 LHON CHARGER FOR XJs**

Charger for XJs

**Compatible with models: XJs |**



#### **Cod. 71058 CONVERSION KIT NIMH XJs**

NiMH conversion Kit for XJs The Kit includes the NIMH battery pack (360Wh) and charger. With the Nimh you can transport the XJ37 on a passenger craf as a NON DANGEROUS ITEM

**Compatible with models: XJs |**



#### **Cod. 71397 BATTERY PACK XK**

Li-ion Battery Pack for XK with DRIVE System Nominal Voltage 36V - Nominal Capacity 1340Wh CE and UN38.3 Certified for Transportation Proprietary BMS control board with unique Suex Specs Battery Charge LCD read out On Board DRIVE System :

**Compatible with models: XK |**



#### **Cod. 71413 LHON CHARGER FOR XK**

Charger for LI-ION Battery XK1 and XK2 :

**Compatible with models: XK |**



**Cod. 71029 BURNTESTER**

Fits all SUEX MODELS

**Compatible with models:** 7Seven | VRt | VRx | XJt | XJs | XK |



**Cod. 71230 FRAME ZERO**

Revolutionary stabilization system for semi pro and pro cameras. Allows the camera to remain stable and "on line" on the path despite the progress of the scooter. It is possible for professional videomakers to make uniform and stable shooting. The zero system is at the moment unique in

**Compatible with models:** XJt | XJs | XK |



**Cod. 71144 ALL-PURPOSE SUPPORT**

Support for action cam, very easy to install, safe and durable, can also accommodate cameras of larger size of go pro. It also has two locations for the inclusion of any lights or accessories of your choice.

**Compatible with models:** 7Seven | VRt | VRx | XJt | XJs | XK |



**Cod. 71258 ELASTIC BAND VIDEO SUPPORT**

Elastic action cam mount. Easy and quick to install, it guarantees the tightness and the easy positioning or reversal position of the camera.

**Compatible with models:** 7Seven | VRt | VRx | XJt | XJs | XK |



**Cod. 71147 COMPLETE DOUBLE HANDLE**

Left-right handle allows the guide with both hands or indifferently with the right or left hand.

**Compatible with models:** 7Seven | VRt | VRx | XJt | XJs | XK |



**Cod. 71195 COMPLETE NOSECONE XJ 14-37 WITH TOW ATTACHMENT**

Complete nosecone suitable for upgrades of XJ 37 and XJ 14 series, it allows the use of a built-in handle and insertion of a carabiner hook suitable for the scooter's stow.



**Cod. 71209 SUEX WEBBING KIT WITH HARDWARE**

Harness webbing, ideal as an upgrade, consisting of a single piece of heavy duty material suitable for exploratory use. The harness has high quality hardware and once worn it is slightly "preformed". Main features: durability and reliability because built with absolute quality

**Compatible with models:** 7Seven | VRt | VRx | XJt | XJs | XK |



**Cod. 71210 EXPLORER SUEX CROTCH STRAP**

EXPLORER TOWING HARNESS professional choice, suitable for distributing the traction in an ideal way, distributing it in the rear part of the thighs, to avoid fatigue in long distances allowing to fully exploit the performance of the scooter. Enjoy the advantage of travel comfort.

**Compatible with models:** 7Seven | VRt | VRx | XJt | XJs | XK |



**Cod. 70606 TRANSPORT CRADLE**

Support for transport, fits XK and XJOY line. Marine Materials, velcro strap.

**Compatible with models:** 7Seven | VRt | VRx | XJt | XJs | XK |



**Cod. 70221 TOW HARNESS ALL MODELS**

All Models

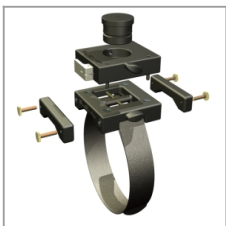
**Compatible with models:** 7Seven | VRt | VRx | XJt | XJs | XK |



**Cod. 71461 LIGHT TRANSPORT CASE VRt**

Light Transport case VRt

**Compatible with models:** VRt | VRx |

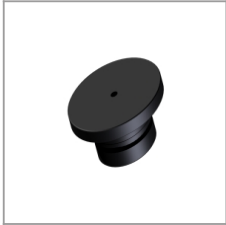


**Cod. 70542 VIDEO CAMERA SUPPORT**

Full Camera/Video Housing mounting Kit. Includes : - Universal Support cod. 70228 - Swivel Support cod. 70230 - Standard Insert cod. 70651 - Floats cod. 70543 WATCH THE VIDEO

**Compatible with models:** 7Seven | VRt | VRx | XJt | XJs | XK |





**Cod. 70649 INSERT FOR SWIVEL MOUNT 70230 80X9MM**

Insert for Swivel Support 70230 with larger diameter (80mm)

**Compatible with models:** 7Seven | VRt | VRx | XJt | XJs | XK |



**Cod. 70449 INSTRUMENT SUPPORT FLAT FOR HANDLES 70208-70209-70309**

Instrument support for handles

**Compatible with models:** VRt | VRx | XJt | XJs | XK |



**Cod. 70821 NBS BALANCED INSTRUMENT SUPPORT**

Balanced instrument support. This support with the mounted instruments can be perfectly balanced in the water without modifying the scooter's buoyancy.

**Compatible with models:** 7Seven | VRt | VRx | XJt | XJs | XK |



**Cod. 70869 POWER GRIP HANDLE XJOY7**

- Wider hand-support compared to the standard Handle allows even more comfortable grip enhancing the already excellent ADV's drive - The special rubber grip guarantees the perfect grip in any driving situation. - T-fix insert for fixing accessories



**Cod. 70536 COLD WATER FRONT HANDLE**

Body handle resistant at low temperature and unbreakable. The wider space between the body and the handle allows a better handling even with thick gloves.

**Compatible with models:** 7Seven | VRt | VRx | XK |



**Cod. 71415 CARRY HANDLE FOR XJ - XK LINE**

**Compatible with models:** XJt | XJs | XK |



**Cod. 70645 T- FIX INSERT FOR HANDLES**

Accessory insert For handles

Compatible with models: VRt | VRx | XJt | XJs | XK |



**Cod. 70547 TOW LEASH KIT ALL MODELS**

Compatible with models: 7Seven | VRt | VRx | XJt | XJs | XK |



**Cod. 70954 Cleaning and Lubrication Kit**

The Kit contains: Vaseline grease Microfiber cloth Suex sticker

Compatible with models: 7Seven | VRt | VRx | XJt | XJs | XK |

**Pricing:**

Pricing does not include taxes (VAT) or shipping and packaging Pricing is valid for the EU countries.  
For other countries please contact directly our Dealers or Distributors.

**\*\*Please note that all pricing is in Euros\*\*** You must convert the Euro pricing we provide to your local or federal currency.

# features



Smartphone connect



External Charge



Suex DRIVE System



Battery Gauge



Li-ion Battery



Fastening device



Main Switch



Proplock Propeller



Speed Adjustment



By-pass System



Easy Trim



Easy Inspect



New Handle Design



Sealed Motor Compartment



NBS - Neutral Buoyancy System



Made Salt Resistant



Motor Protection



Battery Protection



Certifications

## WARRANTY

Each Suex ADV is factory tested underwater and only marketed when all necessary tests are passed, including waterproof tests.

In the event of flooding (meaning the liquid in which the ADV was submerged enters the watertight case) warranty validity is at the discretion of SUEX Srl

Transport and packaging fees to or from the SUEX offices from non EU countries shall be born by the purchaser.

The product (excluding the battery) is covered against all manufacturing defects for a period of two years (reduced to one year for professional use) from the date of purchase proven by a sales document, excluding:

- non-conform use or use other than that foreseen or illustrated in the user's manual
- negligence, attempts to repair or modify the ADV by personnel not expressly authorized by SUEX that jeopardize correct operations or prevent adequate checks and tests to meet repair needs under the warranty
- temporarily rented products
- Scratches or damages to any surface, due to normal product use by the consumer.
- normal wear or deterioration
- damages due to transport, falls or accidents

The batteries supplied with our ADVs are guaranteed for a period of 6 months excluding:

- Defects due to damages, incorrect use, accident, tampering, negligence or neglect and in the event of modifications or repairs made by unauthorized personnel that jeopardize correct operations or prevent adequate checks and tests to meet repair needs under the warranty
- Defects or damages due to product use in conditions other than those described in the user's manual
- Defects or damages due to incorrect controls, operations, maintenance, installation, adjustments, unauthorized applications or any other alteration or modification of any kind.
- Broken or damaged wires or connections unless directly due to material or factory defects.
- Defects or damages due to humidity, liquids or foreign objects introduced within the battery pack or that have rusted any part of the battery.

Use genuine Suex spare parts only.

The use of non-original or not-approved by Suex parts voids warranty and waives Suex for any damage/loss consequent to the use of the Suex scooter with non-original spare parts not approved by Suex.

**DISCLAIMER OF LIABILITY:** SUEX DISCLAIMS LIABILITY FOR INCIDENTAL OR CONSEQUENTIAL DAMAGES and assumes no responsibility or liability for any loss or damage suffered by any person as result of the use or misuse of the Products with non-original parts or not approved by Suex such as BATTERIES.

SUEX assumes or undertakes NO LIABILITY for any loss or damage suffered as result of the use, misuse or reliance on the Products with non-original parts not-approved by Suex.

Have the Suex scooter serviced by Authorized Suex Service Centers ONLY.





**SUEX<sup>®</sup>**   
**THE SUBMARINE EXPLORATION COMPANY**

*The Suex Advanced  
Diving Vehicles,  
the cutting-edge  
technology of  
underwater mobility.*





Suex srl - Via Roma, 261/35  
31020 Villorba (TV)  
Tel.: +39 0422 444 849  
Fax: +39 0422 620 604  
Email: [info@suex.it](mailto:info@suex.it)  
[www.suex.it](http://www.suex.it)